

# WASTE TO VALUE:

Accomplishing our goals towards  
Net Zero Emissions

Presented By: Nisha Sharma



# About Us

## Who We Are

At **Wastech India**, we are dedicated to providing sustainable and responsible waste disposal solutions across India. Our goal is to offer **cost-effective, environmentally friendly services** that not only manage waste efficiently but also reduce the consumption of non-renewable resources.

We work with:



Industries



Businesses



Municipalities

to create tailored waste management strategies that minimize environmental impact, leading the way in promoting a **cleaner and greener future.**





# Our Vision & Mission



## Vision

To be the leading provider of innovative waste management solutions in India, transforming waste into valuable resources and creating a sustainable future for generations to come.



## Mission

Our mission is to provide responsible, cost-effective waste management solutions that reduce the reliance on non-renewable resources. We aim to promote sustainability by using advanced technologies and efficient processes, helping businesses and communities minimize their environmental impact.

# Agenda of Presentation

**01.**

Driving to Net-Zero  
through AFR

**03.**

Types of Alternative  
Fuels

**05.**

Supply Chain  
Management

**02.**

Challenges & Solutions  
to overcome them

**04.**

Global Trends

**06.**

Pre-Processing  
Facility



# Driving to Net-Zero through AFR

## Importance of AFR in Cement Manufacturing



### Environmental Impact Reduction

---

AFR significantly lowers greenhouse gas emissions and reduces the amount of waste sent to landfills, helping mitigate environmental pollution and climate change.



### Economic Benefits

---

AFR reduces the dependency on traditional, more expensive fossil fuels, lowering the operational costs.



### Resource Conservation

---

AFR helps conserve natural resources like coal and petroleum, extending the life of these finite resources and supporting sustainability.

# Challenges & **Solution** in Implementing AFR



## Material Availability

We are constantly engaged with ULB & Bioming projects which ensures the supply of RDF & for other materials also.



## Limited Government Support

Lack of clear policies or financial incentives from the government makes it difficult for companies to adopt AFR



## Quality Control

We have setup a individual facility where we provide according to the industry standards and requirements



## Significant Capex Constraints

As the pre-processing requires high investment, cement industry or similar industries can work in partnership with us



# Types of Alternative Fuels



## BIOMASS / AGRICULTURAL WASTE

Baggase, Mushroom Bed, Cashew Nutshell,  
Bamboo Waste, Husk, Hardwood, Pressmud



## INDUSTRIAL WASTE

Dolachar, Bag Filter Dust, Tyre  
Carbon, Pyrolytic Oil

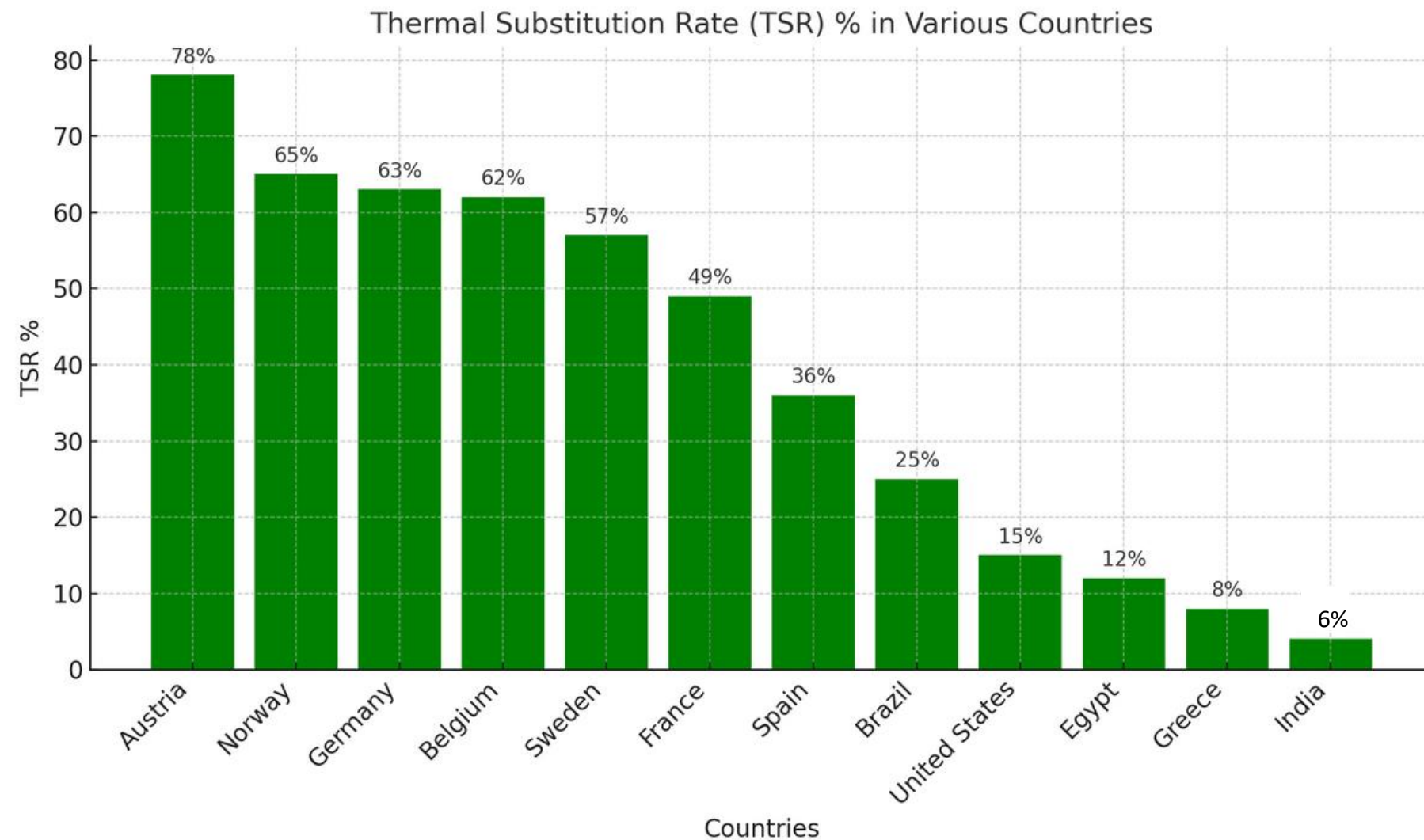


## MUNICIPAL SOLID WASTE (MSW)

(RDF & SRDF)

# GLOBAL TRENDS

## Waste Utilization in Various Countries



### In usage of AFR

In Europe, the use of AFR in cement manufacturing has significantly advanced due to strong regulatory frameworks, government incentives, and environmental policies. Many European countries, such as Germany, Switzerland, and the Netherlands, have successfully achieved AFR usage rates of **over 60%**, driven by strict waste management laws, well-developed infrastructure, and strong collaboration between industries and governments.

India lags behind in AFR adoption, with a rate of **around 6-7% on average** in the cement sector. Various factors such as insufficient waste segregation, lack of supportive government policies, and limited infrastructure for processing waste have hindered the growth of AFR in India. However, **India strongly aims to achieve a Thermal Substitution Rate (TSR) of 25-30% by 2030.**



# Supply Chain Management



## Source

We source waste from a variety of channels, including urban local bodies (ULBs), project biomining, and partnerships with local farmers for agricultural waste.



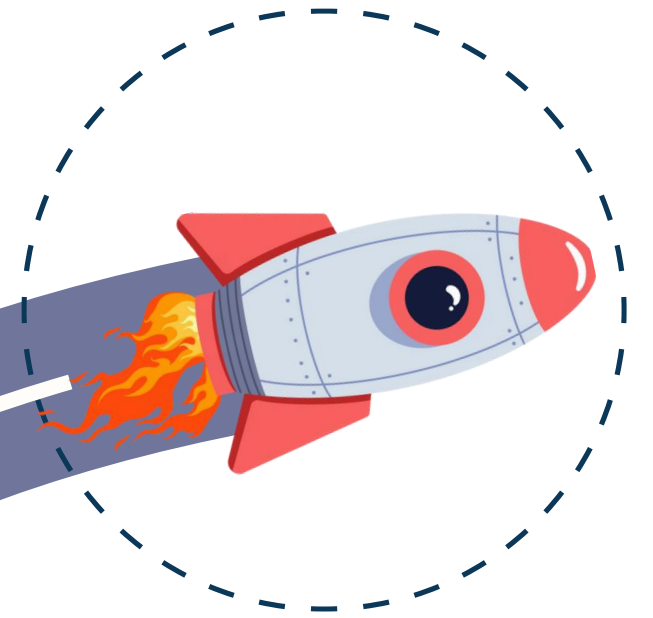
## Process

At our pre-processing facility in Dharsiwa, we utilize advanced machinery to enhance the quality of waste materials.



## Distribution

Our efficient transportation network enables the smooth handling and movement of waste materials.





## PRE-PROCESSING FACILITY

- 170,000 Square feet dedicated to AFR
- Conserving fossil fuels and reducing carbon footprints
- Supplying prepared AFR material to cement plants
- Equipped with advance machineries
- Diverting waste from landfills

# CLIENTELE

relations that matter



# Thank You!

Connect with us for further queries & discussions



0771-355-0254, 08821937000



ho.raipur@wastechindia.com



@WastechIndia



[www.wastechindia.com](http://www.wastechindia.com)



Head Office- Sector 2, HN B/36,  
RDA Colony, Devendra  
Nagar, Raipur, Raipur,  
Chhattisgarh 492004



Branch office- 103, 1st Floor,  
Ocean Plaza, Sector -18,  
Noida, Uttar Pradesh 201301